

RNAV1 (DME/DME or GNSS)  
APPROACH TRANSITIONS CHART -  
INSTRUMENT - ICAO

DISTANCES IN NAUTICAL MILES  
TRACKS ARE MAGNETIC  
ALTITUDES AND ELEVATIONS ARE IN FEET

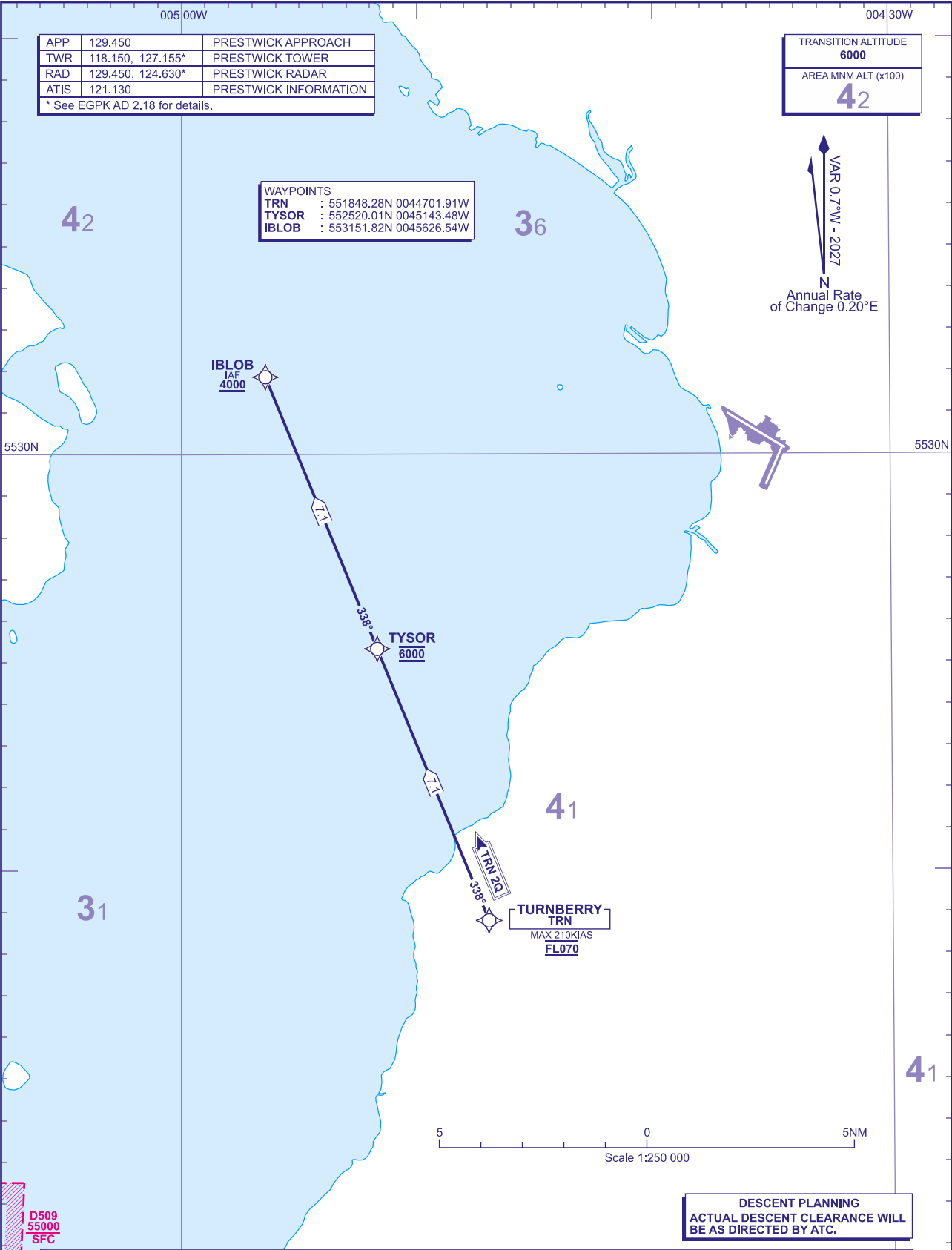
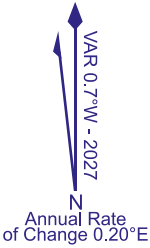
PRESTWICK  
RWY 12  
TRN 2Q

APP	129.450	PRESTWICK APPROACH
TWR	118.150, 127.155*	PRESTWICK TOWER
RAD	129.450, 124.630*	PRESTWICK RADAR
ATIS	121.130	PRESTWICK INFORMATION

\* See EGPK AD 2.18 for details.

WAYPOINTS	
TRN	: 551848.28N 0044701.91W
TYSOR	: 552520.01N 0045143.48W
IBLOB	: 553151.82N 0045626.54W

TRANSITION ALTITUDE
6000
AREA MNM ALT (x100)
42



D509 55000 SFC		DESCENT PLANNING ACTUAL DESCENT CLEARANCE WILL BE AS DIRECTED BY ATC.	
ROUTE DESIGNATOR	ROUTE	LEVELS	
TRN 2Q	TRN - TYSOR - IBLOB	TRN	FL070
		TYSOR	6000
		IBLOB	+4000